

## LIFFEY VALE HOUSE & RIVERINE ECOLOGY CENTRE - Project Update July 2020

It is proposed that Liffey Vale House and its associated grounds are to be developed as a centre for biodiversity. The site will offer the opportunity for all to spend time in nature, and learn about the animals, plants, and ecological systems that thrive in close proximity to the city.

It is proposed that the entire site and buildings will be developed, and managed, as an exemplar of best practice for sustainable management of the landscape, and sustainable conservation of an historic building. It is also a priority to ensure access to all to experience nature at Liffey Vale.

The site is divided, on the basis of historic and natural divisions into areas of orchard, garden and wilderness. Liffey Vale House will include interpretation on biodiversity, a multi-purpose learning space, large enough for school groups, a small café and associated public toilets. Our approach to the design has been to respect the existing scale of the house and its relationship to the site, with new additions being complementary in scale and form. In the interior of the house, we will retain traces of the historic features; floors and fireplaces that have been lost over the years. The building will tell stories as well as provide the setting for stories to be told.

The differences in floor levels between the spaces within the old house are connected by a series of ramps. These are integral to the experience of moving through the exhibition spaces for all. The interpretive designers will work closely with the rest of the team to capture the richness of the natural history of the site and encourage curiosity in visitors of all ages and abilities. They will make use of audio-visual techniques within the building, and materials that appeal to all the senses.

Once out in the open a series of paths will be provided to allow access for all through a range of natural features, including woodland, wetland, the river edge etc. A range of interpretative methods will be used to inform and guide while a significant area of the site will be left inaccessible and wild.

In the following pages we include a site plan, plans and sections of the house, and a few pages of ideas prepared by design team to evoke the approach to interpretation.

The proposals outlined reflect the responses received to date by the design team following a number of public and stakeholder meetings held before the onset of the lockdown. It is the intention to present these proposals over the coming months to stakeholders again before returning to the Area Committee with pre part 8 designs in the autumn.

**Donncha Ó Dúlaing**

**CRES**



**Site Extents and Adjacent Site**



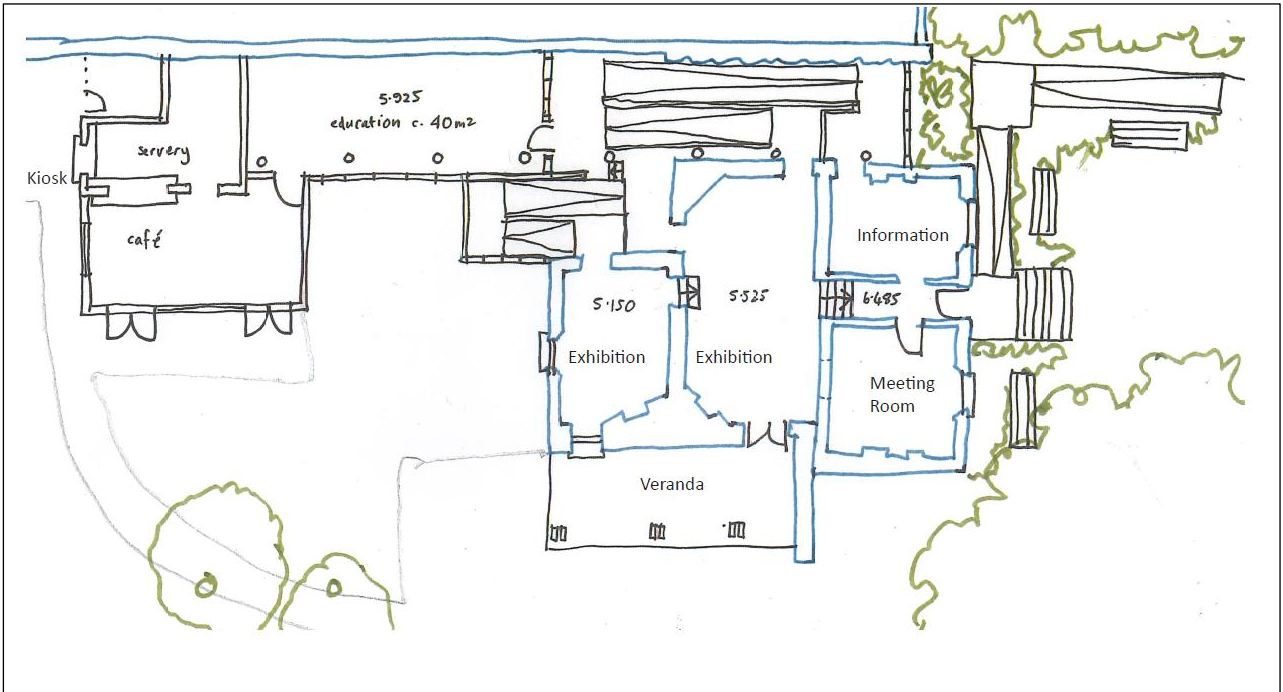
The House



The garden, the river and the wilderness

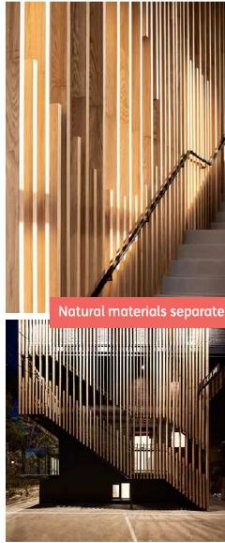




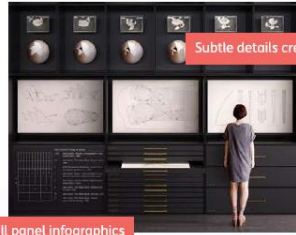




Visitor Centre  
Zone 3



Natural materials separate the room



Wall panel infographics



Subtle details create a beautiful space



Immersive wallpaper graphics

Look out at the orchard and the tram line